



# Lewknor C of E Primary School Newsletter



Monday 29th November, 2021

## FOLS CHRISTMAS DINNER TREAT



Our school's Christmas dinner treat this year is going to be a real cracker! Friends of Lewknor School have booked and paid for all the children and staff to have a proper posh nosh up at the Lambert Arms hotel. There will be two courses. A turkey main with all the trimmings and a yummy pudding. Children and staff can come to school on Thursday 16th December dressed in Christmas jumpers and hats (though FOLS have even bought hats for all the children). We will make our own way to the Lambert Arms on foot singing Christmas carols along the way. And...there may be an extra surprise treat when we get back to school!

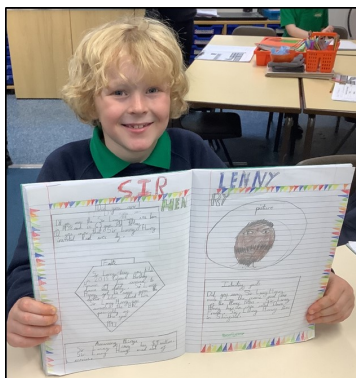


## DATE IN YOU DIARY

Our nativity and Christmas carol concert will be held in the playground (weather permitting) on the last day of term, Friday 17th December. We are planning to put on our performance at the end of the school day but more details about timings will follow.

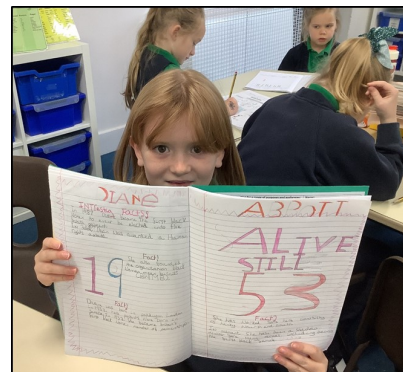
## Headteacher's Welcome

## BLACK HISTORY MONTH CLASS CELEBRATION



*Charlie chose to find out facts about Sir Lenny Henry*

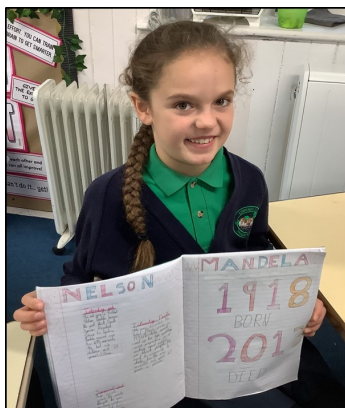
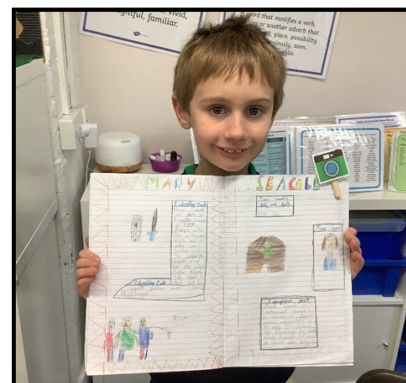
In October all the children at school celebrated Black History Month and learned about important people who achieved great things in their lives. Here are some children with their very neat presentations.



*Emmie chose to study Diane Abbott*



*Lily, pictured left, wrote about Rosa Parks while Jasper, right, found out about Mary Seacole*



*Lexi wrote about Nelson Mandela*



*Heidi studied Mary Seacole while Bill and Camille both chose the boxer Len Johnson*

LEWKNOR C of E PRIMARY SCHOOL HIGH STREET LEWKNOR OXFORDSHIRE OX49 5TH

Head Teacher: Mrs D Cole

Telephone: 01844 351542 E-mail: [office.3184@lewknor.oxon.sch.uk](mailto:office.3184@lewknor.oxon.sch.uk) Website: [www.lewknor.eschools.co.uk](http://www.lewknor.eschools.co.uk)



## FANTASTIC, FUN FABRIC FACES — INFANTS CLASS



*Jack, Cally and Amber choose coloured fabric*

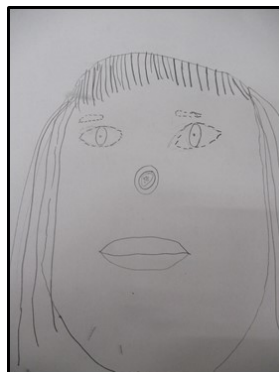
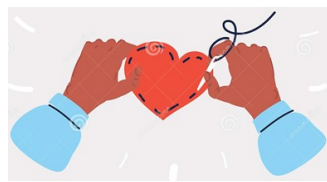


*Sonny, Ariana and Harry get cutting*

At the beginning of the year the Infants class learned how to draw self-portraits in art. Now they are learning how to make fabric faces in design technology lessons. Mrs Lomas explained that the children looked at different fabrics and decided which would be the best to make the hair, eyes, teeth and nose for their faces. They then created a template of a face, cut up the fabric into features, and used a running stitch to sew the features on to the face. I'm looking forward to seeing the finished results.



*Lucy holds up her sketch (see right) and makes a start on her fabric face*



*Rubie Tuesday shows her sketch and the start of her fabric face*



## BE THE CHANGE

This week's Agent of Change is Georgie, pictured right. Georgie was looking through a magazine and found an envelope for the Crisis charity. Her mummy explained that Crisis helps people who are homeless.

Georgie then came up with a great idea. She would skip for 30 minutes every day to raise money so that homeless people can get a Christmas lunch.

Well done, Georgie. You are an amazing ambassador for our school's Be The Change Campaign, which helps teach children that small acts of kindness can make a big difference to someone else's life.



## POPPY APPEAL

The Royal British Legion wrote to school last week to thank us for our donation to the Poppy Appeal. We managed to raise a total of £162 — not bad for a small school with only 80 children. Well done, everyone!



## WORD OF THE WEEK

### Harsh

#### Adjective

- 1) A person who is **harsh** is unkind.
- 2) Weather that is **harsh** is cold and unpleasant.
- 3) A voice or other sound that is **harsh** sounds rough and unpleasant.

Mrs Cole

# Lewknor C of E Primary School



**YOUR  
SCHOOL  
LOTTERY**

**WIN CHRISTMAS!**

25

**WIN**

**HUGE  
FOOD HAMPER**



**LUXURY  
CHRISTMAS TREE**



**TABLE & TREE  
DECORATIONS**

**FESTIVE  
DOOR WREATH**



**BUBBLY &  
CHOCOLATE**



**LIGHTS, CANDLES  
& STOCKINGS**

- Give a little back by supporting our lottery
- Help boost school fundraising
- Tickets cost just £1 a week
- Weekly cash prizes, up to £25,000

To play now, go to:

**[www.yourschoollottery.co.uk](http://www.yourschoollottery.co.uk)**

and search for: Lewknor



Supporters must be 16 years of age or older. Offer ends 11<sup>th</sup> Dec 2021. Terms and conditions apply (see website).