



# Lewknor C of E Primary School Newsletter



Monday 14th October, 2019

## BIG ME DAY ON FRIDAY!



Don't forget we are holding our Big Me Day on Friday 18th October.

This is a chance for children to learn about all the different careers they can have when the time comes for them to leave education.

Parents have volunteered to come into school to talk about their jobs, and the children get to dress up to show what they would like to be when they leave school or university.

Last year Charlie (above) came dressed as a rock star while brother Freddie (below) came as a palaeontologist!



## Headteacher's Welcome

### UPPER JUNIORS LEARN ABOUT EVOLUTION ON SCHOOL TRIP



The Upper Juniors (pictured above with Miss Lawes and Mrs Birch) visited Oxford's University Museum of Natural History to learn all about evolution, which is part of the science curriculum.

They learned that the first animals evolved in the sea over half a billion years ago. They discovered how animals have adapted to the environment in order to survive and how fossils can show how various animals have evolved.

The children had a tour of the many interesting exhibitions and even had the chance to handle some of the live critters.



*Above: Brave Lucan holds a hissing cockroach!*

LEWKNOR C of E PRIMARY SCHOOL HIGH STREET LEWKNOR OXFORDSHIRE OX49 5TH

Head Teacher: Mrs D Cole

Telephone: 01844 351542 E-mail: [office.3184@lewknor.oxon.sch.uk](mailto:office.3184@lewknor.oxon.sch.uk) Website: [www.lewknor.eschools.co.uk](http://www.lewknor.eschools.co.uk)





# Lewknor C of E Primary School



*Far left: Callum*

*Left: Eva with hissing cockroach*

*Below: some of the interesting creepy crawly exhibits (and beautiful butterfly)*



*Left: Marie and Meira*

*Below: Logan, James and Elliot with a stuffed otter!*



*Left: Mylah, Honor, Leah, Chloe and Eva observe rather than touch!*







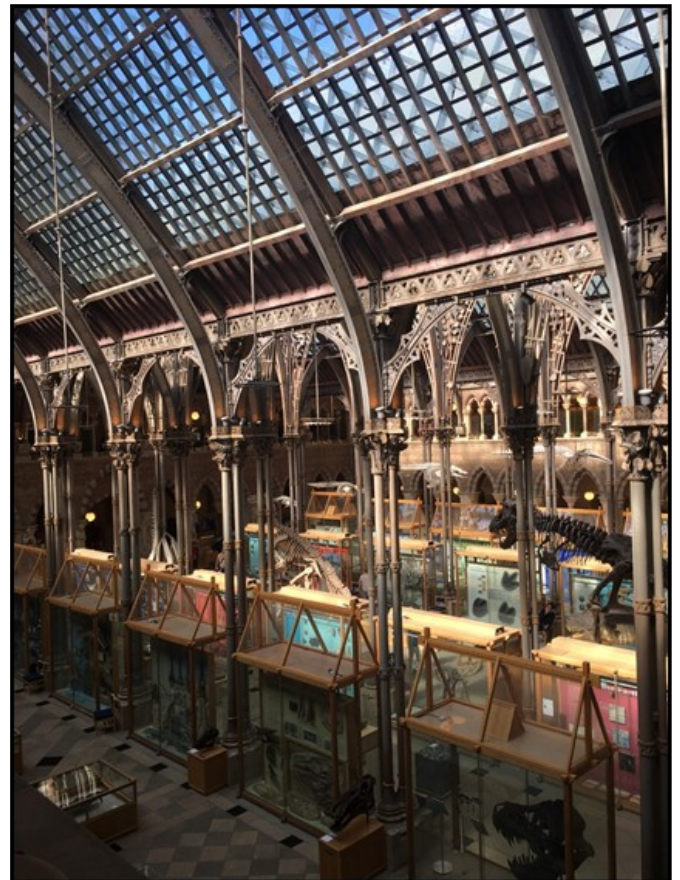
# Lewknor C of E Primary School



## DAY AT THE MUSEUM

*Left: the class listens carefully*

*Below: Inside the museum*



*Above: Jess takes some notes*



*Above and left: a fossil of a dinosaur and more exhibits*

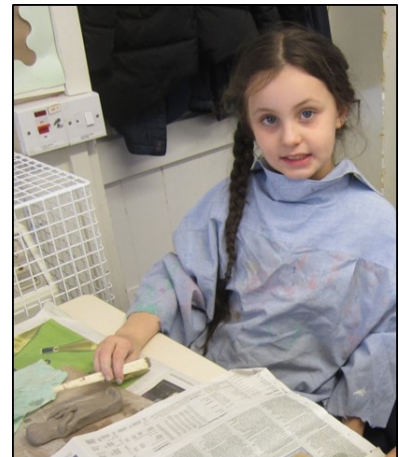




# Lewknor C of E Primary School



## ART IN LOWER JUNIORS



The children in the Lower Juniors class are studying Ancient Egypt and here they are pictured making Egyptian mummies out of clay. The children planned and designed their work first, then modelled the clay. The models will be painted and are to be displayed during our Transformation Evening on Thursday 14th November.

We recently received an extremely generous gift from one of our parents to go towards the art curriculum. The teachers and I are extremely grateful and we have already purchased a raft of new resources to make the arts at Lewknor even more exciting!







# Lewknor C of E Primary School



## The Infants



Last week we featured photos of the new reception class, and this week it is the Infants' turn. Here they are looking very well-behaved and serious (above), while below it looks like they are letting off a bit of steam (or having a bit of fun!). I wish all the children a very happy school year.



Mrs Cole



# Lewknor C of E Primary School



## Friends of Lewknor School

Registered Charity No: 1045910



**WE'VE  
LAUNCHED  
A LOTTERY**

**Buy Your Tickets Today  
To Help Our School**



- Lewknor C of E Primary School has launched a lottery!
- Tickets cost just £1 per ticket, per week and 40% of all ticket sales are donated to our school.
- A **GUARANTEED** cash prize to someone on our supporter list every week.
- A further chance of winning £25,000 in a separate draw **EVERY WEEK!**
- Draws are every Saturday at 8pm and results are posted online.

To start supporting, Visit:

**[www.yourschoollottery.co.uk/play](http://www.yourschoollottery.co.uk/play)**

And Search For:

**Lewknor C of E Primary School**

Supporters must be 16 years of age or older.







## Ideas for a *'healthy'* lunchbox.....



A healthy packed lunch should include something from each of the four main food groups -

starchy carbohydrates (bread, rice, potatoes, pasta), fruit and vegetables, protein containing foods (meat, fish, eggs and beans), and milk and dairy foods – as well as a drink. Here are some ideas of items for each group:

### **Starchy carbohydrates**

A sandwich/roll/wrap/pitta bread (trying using wholegrain varieties or 50/50)

Pasta/couscous/rice

### **Protein filling**

Lean meat/chicken/turkey (add lettuce or tomatoes!)

Fish/tuna (add cucumber or peppers!)

Eggs

Beans

### **Fruit and vegetables**

Chop raw vegetable crudité's such as carrot sticks which can be great for dipping in hummus

Fresh fruit (apple, grapes, banana, kiwi)

Dried fruits (raisins, apricots)

### **Dairy**

Low fat yoghurt – plain or fruit (watch out for those high in sugar!)

Small pot of rice pudding

Low fat cheese slices

### **Added extras**

Plain popcorn or reduced fat crisps

Sugar-free jelly pot

A plain biscuit

(There's nothing wrong with this, just try to make healthier choices when you can)

**Put in a drink** – It is important to stay hydrated, so give your child a bottle of plain water, plain milk (skimmed or semi-skimmed), or no added-sugar fruit juice

For complete lunchbox ideas and tips, visit: <https://www.nhs.uk/change4life/recipes/healthier-lunchboxes>



# Lewknor C of E Primary School



## Diary Dates

Diary dates for this academic year—new or changed diary dates are highlighted in green.

**2019-2020**

**Every Tuesday, Wednesday and Thursday mornings - Daily Mile**

15th October	FoLS AGM — 7.30pm at school
15th October	LJ Class swimming lesson
18th October	Big Me Day!
19th October	FoLS Bingo Night
24th October	Make Me Smile Day—parent assembly at 2.30pm
25th October	School Open Morning (9.00-11.00am)
25th October	Flu vaccinations (all year groups)
25th October	Break up for half term at 3.15pm
TBC November	Year 5 visit to ICC
4th November	Return to school
5th November	Bag2School collection
11th November	Remembrance Day assembly at 10.50am (all welcome)
14th November	Transformation Evening - come and see what your child has been learning at school (time TBC)
22nd November	FoLS Film Night for children
26th November	Big Christmas Sing (selected children in KS2)
29th November	Bright Sparks assembly
5th December	Christingle making (afternoon)



**Assemblies are held every Friday at 9.10am. Parents and members of the community are welcome to attend.**





# Lewknor C of E Primary School



## Diary Dates

Diary dates for this academic year—new or changed diary dates are highlighted in green.

**2019-2020**

**Every Tuesday, Wednesday and Thursday mornings - Daily Mile**

6th December	Christingle Assembly
6th December	FoLS Christmas disco (evening)
9th December	School choir visit to Chiltern Grange Care Home
10th December	School choir visit to Hempton Field Care Home
11th December	Whole school visit to Oxford Playhouse to see Beauty and the Beast
17th December	School Nativity (morning performance at 9.30am)
18th December	School Nativity (evening performance at 6.00pm)
19th December	Whole school Christmas lunch provided and served by FoLS
19th December	Break up for Christmas at 1.30pm
6th January	Return to school
20th January	National Childhood Measurement Programme weights and measures for children in Reception and year 6
3rd-7th February	After School Book Fair
13th February	FoLS Community Concert fundraiser
14th February	Break up for half term at 3.15pm
24th February	Return to school
TBC March	Junior Citizens trip for year 6 children
4th March	UJ Class Trip to Chiltern Open Air Museum
5th March	World Book Day at Lewknor (children to dress up)
16th-20th March	Sport Relief Week
19th March	Mothers' Day posy making (pm)
20th March	Mothers' Day assembly
26th March	School choir visit to Hempton Field Care Home



**Assemblies are held every Friday at 9.10am. Parents and members of the community are welcome to attend.**



# Lewknor C of E Primary School



## Diary Dates

Diary dates for this academic year—new or changed diary dates are highlighted in green.

**2019-2020**

**Every Tuesday, Wednesday and Thursday mornings - Daily Mile**

27th March	School choir visit to Chiltern Grange Care Home
TBC April	Kingswood residential trip meeting for LJ class parents
1st April	Parent evening (3.30-5.00pm)
2nd April	Parent evening (5.00-7.00pm)
3rd April	Easter Egg Hunt (whole school)
3rd April	Last day of Spring term - school finishes at 1.30pm
20th April	Return to school
TBC April	LJ class swimming lessons
22nd April	Bikeability training for all year 5 children (safe, serviced bicycle and helmet required)
23rd April	Bikeability training for all year 5 children (safe, serviced bicycle and helmet required)
24th April	School Open Morning
28th April	Bag2School Collection
29th April - 1st May	LJ Kingswood residential trip
TBC May	Year 6 trip to IMPS
TBC May	Puberty talks for UJ class
TBC May	Whole school and class photographs
1st– 22nd May	KS1 SATS (year 2 children)
7th May	May Day celebrations
8th May	Bank Holiday
11th-15th May	KS2 SATS week (year 6 children)



**Assemblies are held every Friday at 9.10am. Parents and members of the community are welcome to attend.**





# Lewknor C of E Primary School



## Diary Dates

Diary dates for this academic year—new or changed diary dates are highlighted in green.

**2019-2020**

**Every Tuesday, Wednesday and Thursday mornings - Daily Mile**

22nd May	Break up for half term at 3.15pm
1st June	Return to school
6th June	Sydenham Fayre
8th-12th June	Year 1 National Phonics Screening
19th June	Fathers' Day Assembly
20th June	FoLS Fun Day
24th June	Practice Sports Day
24th June	Year 6 outing
26th June	FoLS BBQ for whole school and families (midday-1pm)
26th June	Sports Day from 1pm
2nd July	IMPS fundraiser (year 6 children)
3rd July	Whole school moving up day
9th July	KS2 production - morning performance at 9.30am
9th July	KS2 production - evening performance at 6.00pm
10th July	Reserve Sports Day
16th July	Parent evening
17th July	Year 6 Leavers' Assembly
17th July	End of Summer Term - school finishes at 1.30am



**Assemblies are held every Friday at 9.10am. Parents and members of the community are welcome to attend.**



## FREE SCHOOL MEAL ENTITLEMENT

From April 2015, the threshold figure which forms part of the tax credit free school meal eligibility category is £16,190.

Pupils whose parents/carers receive the following support payments are entitled to free school meals (assuming the parent does not receive Working Tax Credit). Under the current criteria, children who receive, or whose parents receive, one or more of the following support payments are entitled to receive free school meals and eligible for two-year-old funding:-

- Income-based and contribution-based Jobseekers Allowance or ESA on an equal basis
- Income Support
- Income-based Jobseekers Allowance
- Income-related Employment and Support Allowance
- Child Tax Credit, provided they are not entitled to Working Tax Credit and have an annual income, as assessed by Her Majesty's Revenue and Customs, that does not exceed £16,190
- Guaranteed Element of State Pension Credit
- Where a parent is entitled to Working Tax Credit run-on (the payment someone receives for a further four weeks after they stop qualifying for Working Tax Credit).
- Support under part VI of the Immigration and Asylum Act 1999.
- Working Tax Credit, provided they have an annual gross income of no more than £16,190 per year (eligible for two-year-old funding only)
- Universal Credit

If you believe your child may be eligible to receive free school meals, please complete an application form and return it to the school office **as soon as possible**. Application forms can be downloaded from the school website or found in paper form in the letter rack at school. There is a very simple, confidential, process we can run through Oxfordshire County Council to check eligibility.

**amazon**smile  
You shop. Amazon gives.

AmazonSmile is a website operated by Amazon with the same products, prices and shopping features as Amazon.co.uk

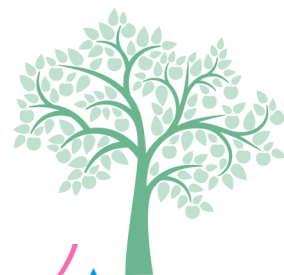
The difference is that when you shop on AmazonSmile, Amazon will donate 0.5% of the net purchase price (excluding VAT, returns and shipping fees) from your eligible AmazonSmile purchases to a charity of your choice.

If you would like help raise additional funds for our school via AmazonSmile, please visit <https://smile.amazon.co.uk> and search for Lewknor School Educational Fund. Thank you!





# Lewknor C of E Primary School



## SCHOOL INFORMATION

### PIANO LESSONS

Michael Davies works in many Oxfordshire schools and has worked at Lewknor for several years.

Michael offers piano lessons and if your child is interested in learning to play, please contact him as follows:

**07857 896600**



OXFORDSHIRE COUNTY MUSIC SERVICE

**Skills and enjoyment for life**

**get into music**

For information on instrumental/vocal lessons and ensembles, visit:

[www.oxfordshire.gov.uk/musicinterest](http://www.oxfordshire.gov.uk/musicinterest)



Follow us on: [facebook.com/oxonmusicervice](https://facebook.com/oxonmusicervice)

[twitter@MusicOxon](https://twitter@MusicOxon)

Supported using public funding by



ARTS COUNCIL  
ENGLAND



Oxfordshire  
Music  
Education  
Partnership



OXFORDSHIRE  
COUNTY COUNCIL

**Have Fun**  
learn to  
**& Drum**

If you would like to sign your child up for drum lessons with Terry Lucas at Lewknor School, please complete a Drum Lesson Interest Form which can be downloaded from the school website (Parents/Music Lessons) and return it to the school office.



LEWKNOR C of E PRIMARY SCHOOL HIGH STREET LEWKNOR OXFORDSHIRE OX49 5TH

Head Teacher: Mrs D Cole

Telephone: 01844 351542 E-mail: [office.3184@lewknor.oxon.sch.uk](mailto:office.3184@lewknor.oxon.sch.uk) Website: [www.lewknor.eschools.co.uk](http://www.lewknor.eschools.co.uk)



# Lewknor C of E Primary School

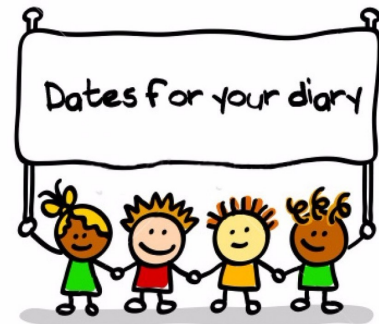
## Friends of Lewknor School



Registered Charity No: 1045910

### DIARY DATES

15th October	FoLS AGM at 7.30pm
19th October	Bingo Night
5th November	Bag2School collection
22nd November	Film Night
6th December	Christmas disco
19th December	Christmas lunch
13th February	Community Concert
7th May	May Day
20th June	Fun Day



**easyfundraising**  
.org.uk

Don't forget that FOLS is registered with Easyfundraising. For more information, please click on this link:-

[www.easyfundraising.org.uk/causes/friendsoflewnorschoolfols](http://www.easyfundraising.org.uk/causes/friendsoflewnorschoolfols)





# Lewknor C of E Primary School

## COMMUNITY INFORMATION



### GRAPEVINE MAGAZINE

The most recent publication of The Grapevine (Parish magazine for Lewknor) can be found by clicking on the link below:-

[www.issuu.com/grapevinezine/docs](http://www.issuu.com/grapevinezine/docs)



[www.ravenscroftsportsacademy.com](http://www.ravenscroftsportsacademy.com)

07928 591727

[contact@ravenscroftsportsacademy.co.uk](mailto:contact@ravenscroftsportsacademy.co.uk)