

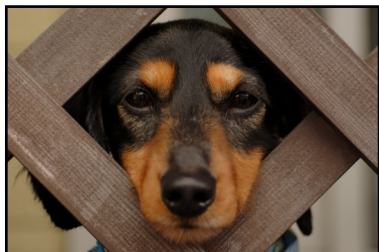


Lewknor C of E Primary School Newsletter



Monday 7th October, 2019

Dogs in the doghouse!



I love dogs and I have enjoyed seeing them in church during our Friday celebration assembly.

However, the parents of several children have been in contact to tell me that we have some children at school who are allergic to dogs while others are frightened of them.

We must put the well-being of our children first and because of that I have to politely ask you not to bring your dogs to church from now on.

Also, we must ask dog owners not to bring their pets into the playground. Again, this is a health and safety matter.

Hopefully, Rocco will still be able to visit us from time-to-time.

Thank you.



Headteacher's Welcome

JAN SAYS A FOND FAREWELL TO HER FRIENDS AT LEWKNOR



Our wonderful teaching assistant Jan Elliot has retired to spend more time with her family.

Jan started working at Lewknor in September 2011 and, though she is not quite the longest serving member of staff (that accolade goes to Miss Hawkes), she has seen many changes in education in the time she has worked here. Jan said: "The curriculum has got much tougher, which has increased the workload of the staff. Saying that, I must say that the staff at Lewknor are, and always have been, committed to the school and the children. They are a lovely group of hard-working people."

Jan, who worked predominately in the reception class, was very much loved by all the children at school. She was always calm, approachable, patient and interested in the children taking time to get to know each and every one of them. She was very much admired by all the members of staff. Jan had a 'can do' attitude to her work and she would willingly volunteer to take on extra duties to help out her colleagues.

Jan may be retiring but she has no intention of putting on her slippers to take things easy now. Instead she is donning her sturdy walking boots because she and five other members of her family are taking part in the Camino de Santiago pilgrimage.

Above: Jan is pictured with the children in the reception class

LEWKNOR C of E PRIMARY SCHOOL HIGH STREET LEWKNOR OXFORDSHIRE OX49 5TH

Head Teacher: Mrs D Cole

Telephone: 01844 351542 E-mail: office.3184@lewknor.oxon.sch.uk Website: www.lewknor.eschools.co.uk



Lewknor C of E Primary School

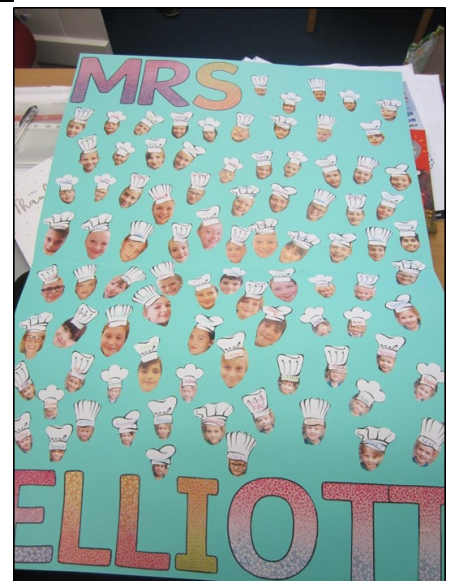


Above: Heidi, Scarlet, Stanley, Florence and Jasmine present some gifts to Jan from the rest of the staff.

They are hoping to complete the 100k in five or six days depending on the weather. Jan said: "It will be an adventure and tough but I'm sure we will enjoy it."

Mrs Birch helped to organise the spectacular leaving card. Inside the card were photographs of every child at school wearing a chef's hat (see picture right)! This is because Jan ran the very popular after-school cookery club, which was always over-subscribed. Luckily, Mrs Birch has agreed to take on Jan's club, which will start up again after half term, while Miss Hawkes will run the after-school care club on Mondays.

We will be holding a special assembly for Jan on Friday 15th November, starting at 9.10am so that parents can wish her well for the future too.



CALLING ALL CORNET PLAYERS!

It is a tradition at Lewknor for the children in Lower Juniors to learn to play a musical instrument, and this year they continue to learn to play the cornet.



Local resident Sarah Hodge, wife of Frank who is one of our school governors, thought our children might be interested in joining the Roke and Benson Brass Band. They run a training band for all new / early learning players of any age, from 7pm to 8pm on a Tuesday evening. Parents would be able to stay and listen for the hour. If you would like to find out more information then visit www.rokeandbensonbrassband.org



Lewknor C of E Primary School



It has been a busy start to the new term. We held a number of meetings with parents to remind them of the rules and routines of our school. Mrs Wakefield and Miss Lawes held a joint meeting for the parents of children in Lower and Upper Juniors. Mrs Lomas is pictured above talking to parents of children in the Infants class, while Miss Harjette is pictured below with parents of children in the reception class. Miss Harjette also held another meeting with parents on Thursday to show how we teach phonics at school.

Our photographs also show the new classroom refurbishment that was completed over the summer holidays. The Infants retain their large classroom but the reception class is now a much better size with easily accessible toilets and outdoor learning area. We have new heaters, new lights, new floors, new coat pegs, a new fire door, and everything has been freshly painted and looks great.

We now have plans to paint the Lower and Upper Juniors classrooms over the October half term holiday.





I love this picture above showing Isaac, Taylor, Douglas, Harley, Hattie and Charlie with their special jars of wishes that they made in Mrs Wakefield's class. You wonder what they may have wished for...

Mrs Cole



Lewknor C of E Primary School



Friends of Lewknor School

Registered Charity No: 1045910



WE'VE LAUNCHED A LOTTERY

**Buy Your Tickets Today
To Help Our School**



- Lewknor C of E Primary School has launched a lottery!
- Tickets cost just £1 per ticket, per week and 40% of all ticket sales are donated to our school.
- A **GUARANTEED** cash prize to someone on our supporter list every week.
- A further chance of winning £25,000 in a separate draw **EVERY WEEK!**
- Draws are every Saturday at 8pm and results are posted online.

To start supporting, Visit:

www.yourschoollottery.co.uk/play

And Search For:

Lewknor C of E Primary School

Supporters must be 16 years of age or older.





Ideas for a *'healthy'* lunchbox.....



A healthy packed lunch should include something from each of the four main food groups -

starchy carbohydrates (bread, rice, potatoes, pasta), fruit and vegetables, protein containing foods (meat, fish, eggs and beans), and milk and dairy foods – as well as a drink. Here are some ideas of items for each group:

Starchy carbohydrates

A sandwich/roll/wrap/pitta bread (trying using wholegrain varieties or 50/50)

Pasta/couscous/rice

Protein filling

Lean meat/chicken/turkey (add lettuce or tomatoes!)

Fish/tuna (add cucumber or peppers!)

Eggs

Beans

Fruit and vegetables

Chop raw vegetable crudité's such as carrot sticks which can be great for dipping in hummus

Fresh fruit (apple, grapes, banana, kiwi)

Dried fruits (raisins, apricots)

Dairy

Low fat yoghurt – plain or fruit (watch out for those high in sugar!)

Small pot of rice pudding

Low fat cheese slices

Added extras

Plain popcorn or reduced fat crisps

Sugar-free jelly pot

A plain biscuit

(There's nothing wrong with this, just try to make healthier choices when you can)

Put in a drink – It is important to stay hydrated, so give your child a bottle of plain water, plain milk (skimmed or semi-skimmed), or no added-sugar fruit juice

For complete lunchbox ideas and tips, visit: <https://www.nhs.uk/change4life/recipes/healthier-lunchboxes>



Lewknor C of E Primary School



Diary Dates

Diary dates for this academic year—new or changed diary dates are highlighted in green.

2019-2020

Every Tuesday, Wednesday and Thursday mornings - Daily Mile

8th October	LJ Class swimming lesson
9th October	Parent evening (3.30-5.00pm)
10th October	Parent evening (5.00-7.00pm)
11th October	Textile recycling assembly
15th October	FoLS AGM — 7.30pm at school
15th October	LJ Class swimming lesson
18th October	Big Me Day!
19th October	FoLS Bingo Night
24th October	Make Me Smile Day—parent assembly at 2.30pm
25th October	School Open Morning (9.00-11.00am)
25th October	Flu vaccinations (all year groups)
25th October	Break up for half term at 3.15pm
TBC November	Year 5 visit to ICC
4th November	Return to school
5th November	Bag2School collection
11th November	Remembrance Day assembly at 10.50am (all welcome)
14th November	Transformation Evening - come and see what your child has been learning at school (time TBC)
22nd November	FoLS Film Night for children
26th November	Big Christmas Sing (selected children in KS2)
29th November	Bright Sparks assembly
5th December	Christingle making (afternoon)



Assemblies are held every Friday at 9.10am. Parents and members of the community are welcome to attend.



Lewknor C of E Primary School



Diary Dates

Diary dates for this academic year—new or changed diary dates are highlighted in green.

2019-2020

Every Tuesday, Wednesday and Thursday mornings - Daily Mile

6th December	Christingle Assembly
6th December	FoLS Christmas disco (evening)
9th December	School choir visit to Chiltern Grange Care Home
10th December	School choir visit to Hempton Field Care Home
11th December	Whole school visit to Oxford Playhouse to see Beauty and the Beast
17th December	School Nativity (morning performance at 9.30am)
18th December	School Nativity (evening performance at 6.00pm)
19th December	Whole school Christmas lunch provided and served by FoLS
19th December	Break up for Christmas at 1.30pm
6th January	Return to school
20th January	National Childhood Measurement Programme weights and measures for children in Reception and year 6
3rd-7th February	After School Book Fair
13th February	FoLS Community Concert fundraiser
14th February	Break up for half term at 3.15pm
24th February	Return to school
TBC March	Junior Citizens trip for year 6 children
4th March	UJ Class Trip to Chiltern Open Air Museum
5th March	World Book Day at Lewknor (children to dress up)
16th-20th March	Sport Relief Week
19th March	Mothers' Day posy making (pm)
20th March	Mothers' Day assembly
26th March	School choir visit to Hempton Field Care Home



Assemblies are held every Friday at 9.10am. Parents and members of the community are welcome to attend.



Lewknor C of E Primary School



Diary Dates

Diary dates for this academic year—new or changed diary dates are highlighted in green.

2019-2020

Every Tuesday, Wednesday and Thursday mornings - Daily Mile

27th March	School choir visit to Chiltern Grange Care Home
TBC April	Kingswood residential trip meeting for LJ class parents
1st April	Parent evening (3.30-5.00pm)
2nd April	Parent evening (5.00-7.00pm)
3rd April	Easter Egg Hunt (whole school)
3rd April	Last day of Spring term - school finishes at 1.30pm
20th April	Return to school
TBC April	LJ class swimming lessons
22nd April	Bikeability training for all year 5 children (safe, serviced bicycle and helmet required)
23rd April	Bikeability training for all year 5 children (safe, serviced bicycle and helmet required)
24th April	School Open Morning
28th April	Bag2School Collection
29th April - 1st May	LJ Kingswood residential trip
TBC May	Year 6 trip to IMPS
TBC May	Puberty talks for UJ class
TBC May	Whole school and class photographs
1st– 22nd May	KS1 SATS (year 2 children)
7th May	May Day celebrations
8th May	Bank Holiday
11th-15th May	KS2 SATS week (year 6 children)



Assemblies are held every Friday at 9.10am. Parents and members of the community are welcome to attend.



Lewknor C of E Primary School



Diary Dates

Diary dates for this academic year—new or changed diary dates are highlighted in green.

2019-2020

Every Tuesday, Wednesday and Thursday mornings - Daily Mile

22nd May	Break up for half term at 3.15pm
1st June	Return to school
6th June	Sydenham Fayre
8th-12th June	Year 1 National Phonics Screening
19th June	Fathers' Day Assembly
20th June	FoLS Fun Day
24th June	Practice Sports Day
24th June	Year 6 outing
26th June	FoLS BBQ for whole school and families (midday-1pm)
26th June	Sports Day from 1pm
2nd July	IMPS fundraiser (year 6 children)
3rd July	Whole school moving up day
9th July	KS2 production - morning performance at 9.30am
9th July	KS2 production - evening performance at 6.00pm
10th July	Reserve Sports Day
16th July	Parent evening
17th July	Year 6 Leavers' Assembly
17th July	End of Summer Term - school finishes at 1.30am



Assemblies are held every Friday at 9.10am. Parents and members of the community are welcome to attend.



FREE SCHOOL MEAL ENTITLEMENT

From April 2015, the threshold figure which forms part of the tax credit free school meal eligibility category is £16,190.

Pupils whose parents/carers receive the following support payments are entitled to free school meals (assuming the parent does not receive Working Tax Credit). Under the current criteria, children who receive, or whose parents receive, one or more of the following support payments are entitled to receive free school meals and eligible for two-year-old funding:-

- Income-based and contribution-based Jobseekers Allowance or ESA on an equal basis
- Income Support
- Income-based Jobseekers Allowance
- Income-related Employment and Support Allowance
- Child Tax Credit, provided they are not entitled to Working Tax Credit and have an annual income, as assessed by Her Majesty's Revenue and Customs, that does not exceed £16,190
- Guaranteed Element of State Pension Credit
- Where a parent is entitled to Working Tax Credit run-on (the payment someone receives for a further four weeks after they stop qualifying for Working Tax Credit).
- Support under part VI of the Immigration and Asylum Act 1999.
- Working Tax Credit, provided they have an annual gross income of no more than £16,190 per year (eligible for two-year-old funding only)
- Universal Credit

If you believe your child may be eligible to receive free school meals, please complete an application form and return it to the school office **as soon as possible**. Application forms can be downloaded from the school website or found in paper form in the letter rack at school. There is a very simple, confidential, process we can run through Oxfordshire County Council to check eligibility.

amazonsmile
You shop. Amazon gives.

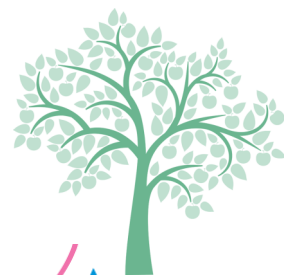
AmazonSmile is a website operated by Amazon with the same products, prices and shopping features as Amazon.co.uk

The difference is that when you shop on AmazonSmile, Amazon will donate 0.5% of the net purchase price (excluding VAT, returns and shipping fees) from your eligible AmazonSmile purchases to a charity of your choice.

If you would like help raise additional funds for our school via AmazonSmile, please visit <https://smile.amazon.co.uk> and search for Lewknor School Educational Fund. Thank you!



Lewknor C of E Primary School



SCHOOL INFORMATION

PIANO LESSONS

Michael Davies works in many Oxfordshire schools and has worked at Lewknor for several years.

Michael offers piano lessons and if your child is interested in learning to play, please contact him as follows:

07857 896600



OXFORDSHIRE COUNTY MUSIC SERVICE

Skills and enjoyment for life

get into music

For information on instrumental/vocal lessons and ensembles, visit:

www.oxfordshire.gov.uk/musicinterest



Follow us on: facebook.com/oxonmusicservice

twitter@MusicOxon

Supported using public funding by



ARTS COUNCIL
ENGLAND



Oxfordshire
Music
Education
Partnership



OXFORDSHIRE
COUNTY COUNCIL



Have Fun
learn to
& Drum

If you would like to sign your child up for drum lessons with Terry Lucas at Lewknor School, please complete a Drum Lesson Interest Form which can be downloaded from the school website (Parents/Music Lessons) and return it to the school office.

LEWKNOR C of E PRIMARY SCHOOL HIGH STREET LEWKNOR OXFORDSHIRE OX49 5TH

Head Teacher: Mrs D Cole

Telephone: 01844 351542 E-mail: office.3184@lewknor.oxon.sch.uk Website: www.lewknor.eschools.co.uk



Lewknor C of E Primary School

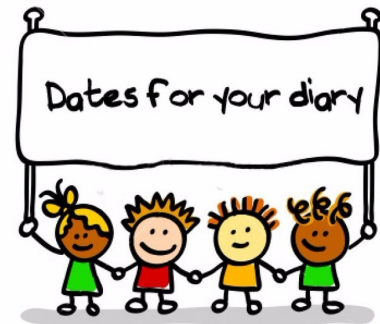
Friends of Lewknor School



Registered Charity No: 1045910

DIARY DATES

15th October	FoLS AGM at 7.30pm
19th October	Bingo Night
5th November	Bag2School collection
22nd November	Film Night
6th December	Christmas disco
19th December	Christmas lunch
13th February	Community Concert
7th May	May Day
20th June	Fun Day



easyfundraising
.org.uk

Don't forget that FOLS is registered with Easyfundraising. For more information, please click on this link:-

www.easyfundraising.org.uk/causes/friendsoflewnorschoolfols



Lewknor C of E Primary School

COMMUNITY INFORMATION



GRAPEVINE MAGAZINE

The most recent publication of The Grapevine (Parish magazine for Lewknor) can be found by clicking on the link below:-

www.issuu.com/grapevinezine/docs



www.ravenscroftsportsacademy.com

07928 591727

contact@ravenscroftsportsacademy.co.uk